

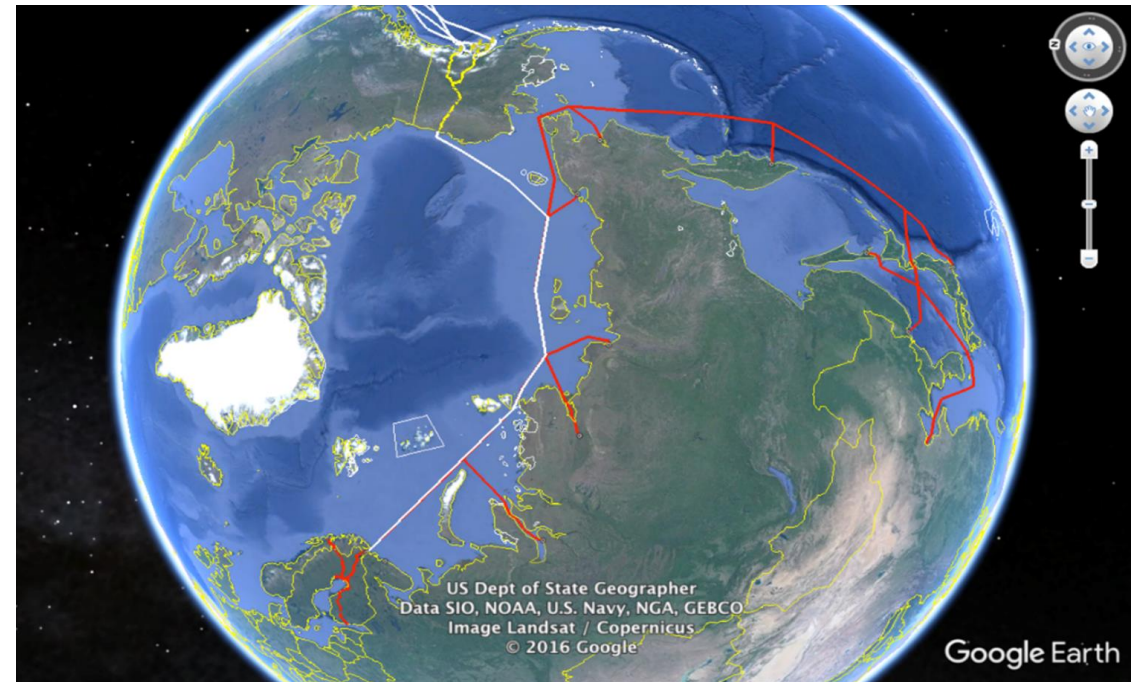


Arctic Connect

Øst-Finnmarkrådet

17 . November

Kenneth Stålsett,



Helsinki, 17 May 2017

Ketil Solvik-Olsen
Minister of Transport and Communications of Norway

Arctic transport and telecommunications connections

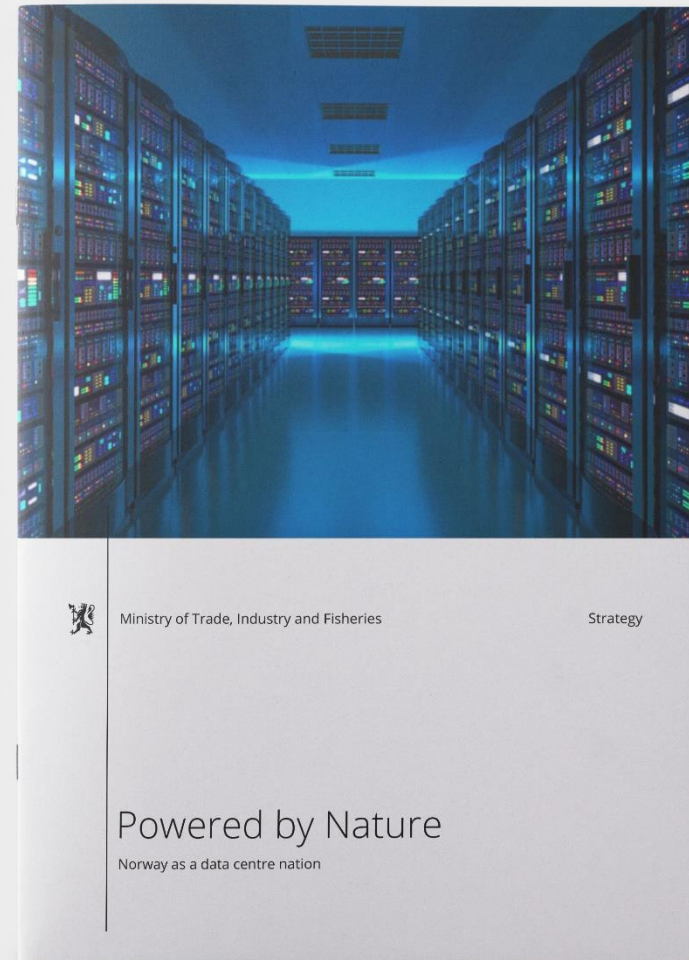
Dear Minister Solvik-Olsen

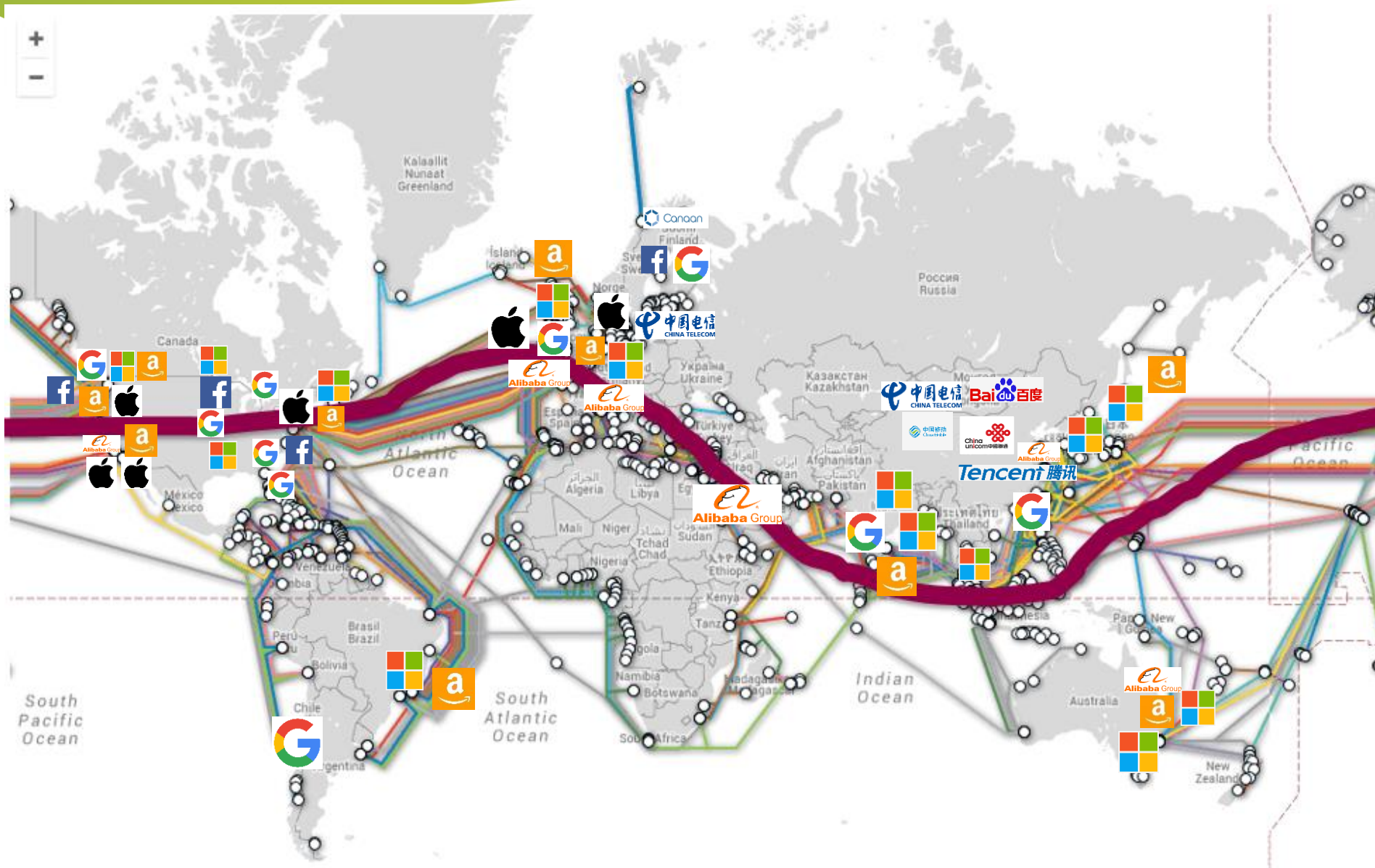
Finland assumed the chairmanship of the Arctic Council on 11 May 2017. It is in our interests to promote, with the help of high-quality digital and physical environments, the creation of favourable conditions for sustainable business growth in the Arctic region. The Arctic Ocean provides opportunities for both Finland and Norway, and the entire Northern Europe.

Political commitment

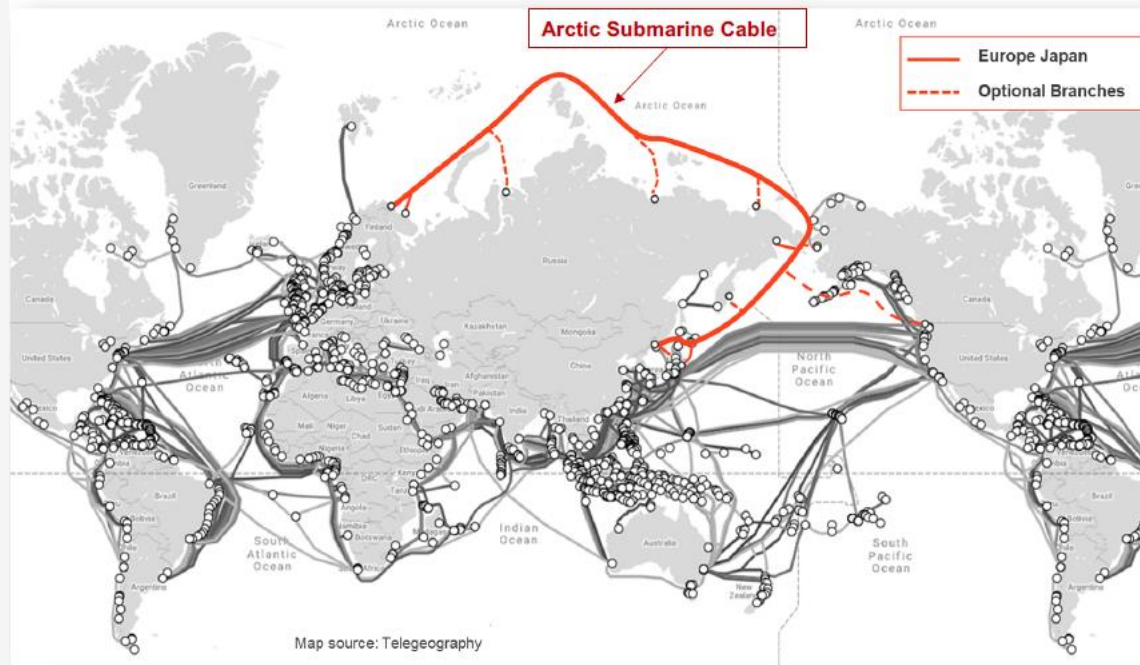
A data center strategy signed by four ministers represents a strong political commitment to continuously work to improve the framework conditions (taxes, energy, fiber) for the data center ecosystem.

The strategy is currently being revised.





Diversity and new shorter routes are required



- **Route diversity ...**
- **... to improve the redundancy**
- **... and to create shorter routes between locations**

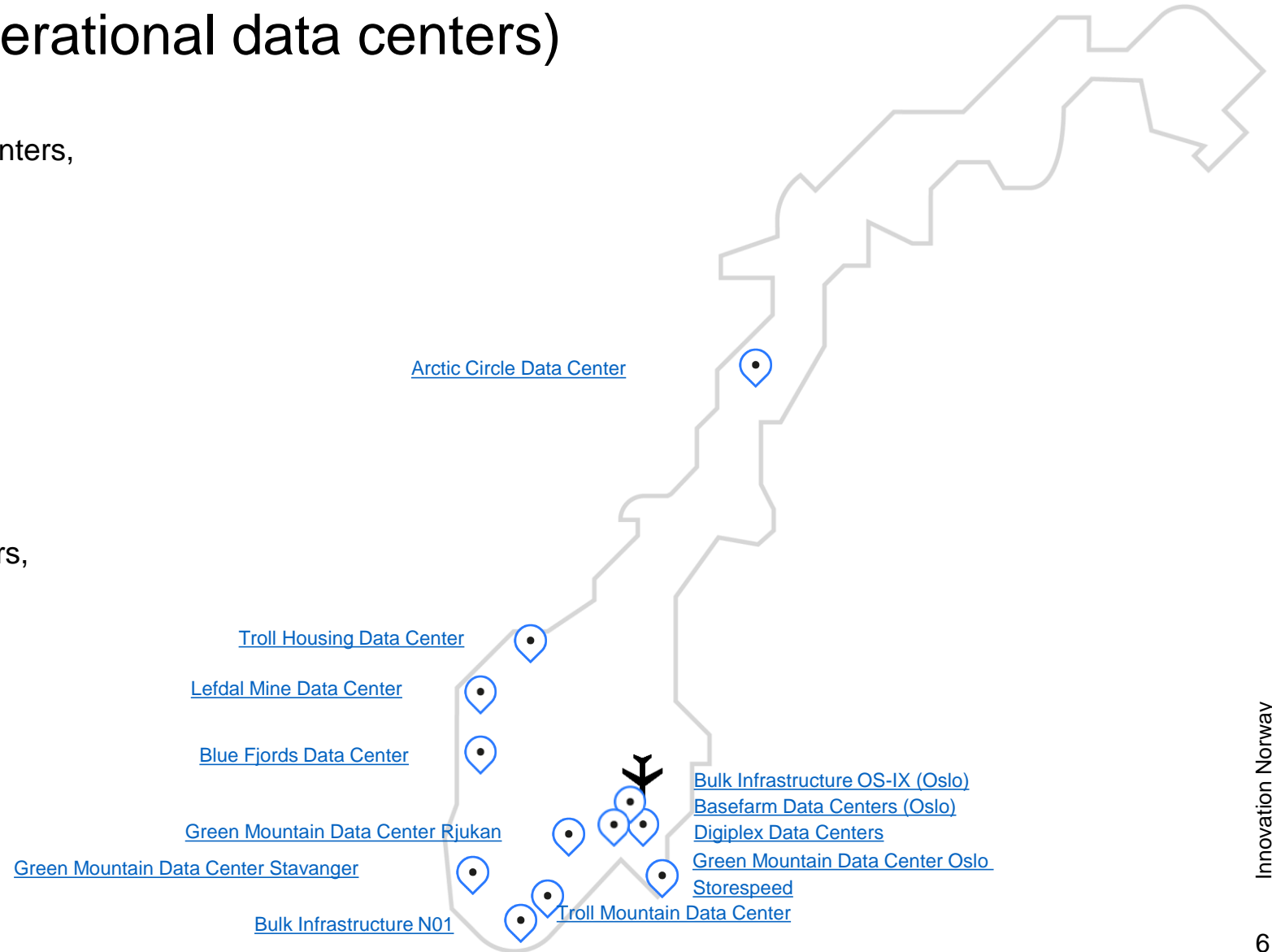
Colos and wholesale (operational data centers)

Norway has a portfolio of established data centers, including

- Digiplex
- Basefarm
- Green Mountain
- Lefdal
- Bulk

And several newer and or smaller data centers, including

- Arctic Circle Data Center
- Troll Housing Data Center
- Blue Fjords Data Center
- Troll Mountain Data Center
- Storespeed



GLOBAL DATA PRODUCTION INCREASING AT AN EXPONENTIAL RATE



CONSUMERS

4.6BN
ACTIVE
INTERNET
USERS ¹



BUSINESSES

75%
ENTERPRISES
OPERATIONALISED
AI BY 2024 ²



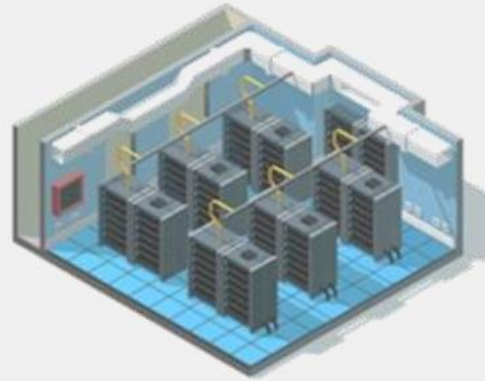
IOT

26.7BN
ACTIVE
CONNECTED
DEVICES ³



1. Statista
2. Gartner
3. Safe at Last

IMPACT OF THE DATACENTRE ON A LOCAL ECONOMY



FOR LOCAL TALENT:

- **Employment opportunities** - construction, management, and maintenance
- **Apprenticeship programs** to re-skill
- Spin-offs and **entrepreneurship** opportunities
- '**Clustering effect**' as competitors, customers and co-opetitors flock to the area

FOR LOCAL BUSINESSES:

- Service industry built around the datacentre. **Opportunity to form the operator's supply chain** (real estate, industrial, energy, PR, legal, events, HR, etc)
- **Talent pool improves** as skilled workers migrate to the area
- **Improved connectivity** and data storage capacity

FOR LOCAL GOVERNMENT:

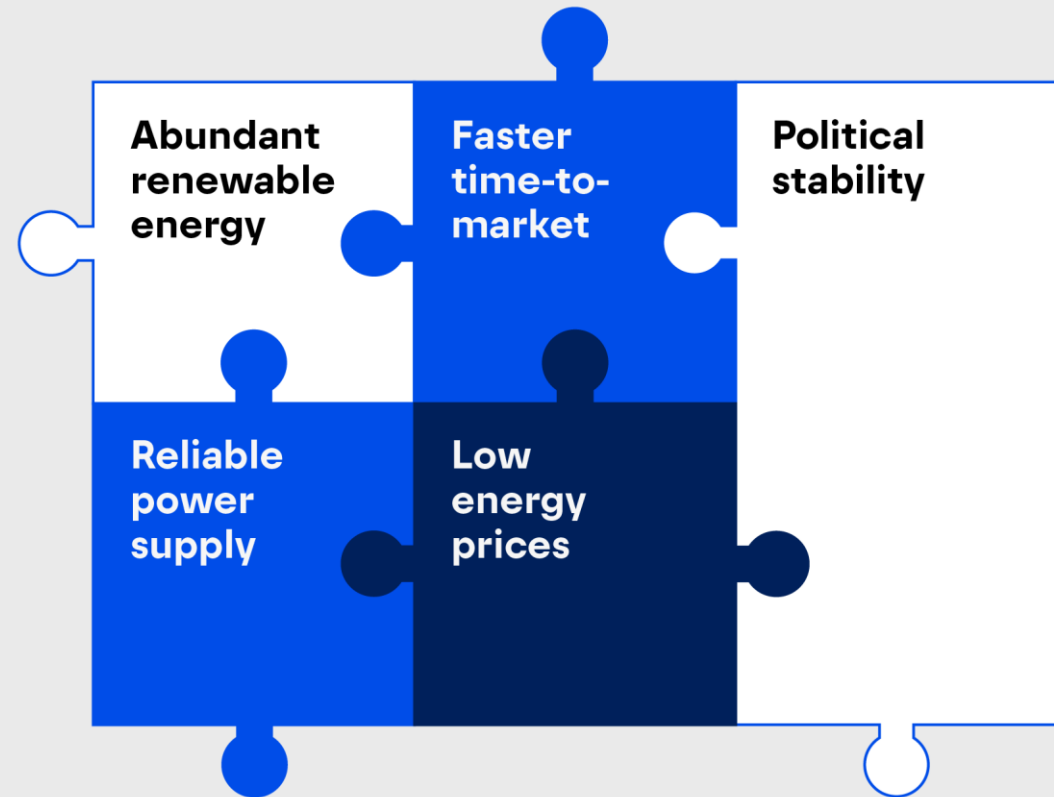
- Higher tax revenues
- Happier, wealthier, motivated population



Why investors choose the Nordics

«The Nordics have the potential to evolve as a truly global data hub, connecting Europe to the North America and Asia,»

Philip Low, *independent analyst, Chairman of BroadGroup*

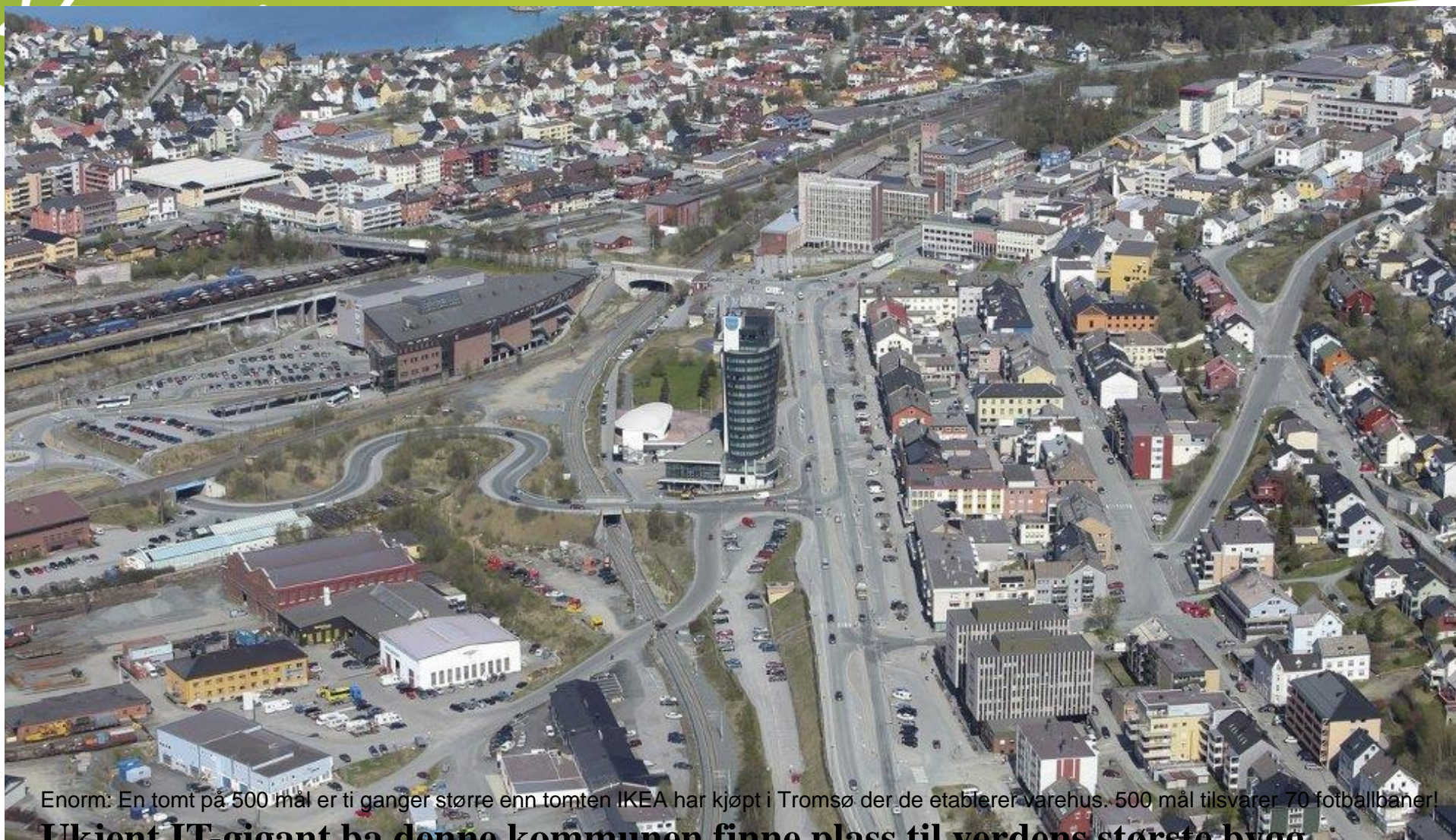


What could Arctic Connect mean?

- “Game changer” – reducing latency by 25-40% and enabling Philip Low’s vision of the Nordics as a global hub
- Opening up the north – snowball effect (outside of Luleå?)
- **What needs to be in place? An ecosystem ...**
 - In a hybrid world, colos with local and or national clients can open up a market
 - Market knowledge (i.e. which market segment to target?) and muscle
 - **Competent workforce**
 - **Investment ready sites – including energy infrastructure**
 - **Cooperation in the north, and also within the whole country**

«The Nordics have the potential to evolve as a truly global data hub, connecting Europe to North America and Asia,»

Philip Low, *independent analyst, Chairman of BroadGroup*



Enorm: En tomt på 500 mål er ti ganger større enn tomten IKEA har kjøpt i Tromsø der de etablerer varehus. 500 mål tilsvarer 70 fotballbaner!

Ukjent IT-gigant ba denne kommunen finne plass til verdens største bygg

Blir ti ganger større enn IKEAs tomt i Tromsø

Terje Næsje [E-post](#)

[Tweet](#)

•[Skriv ut](#)

•[Tips en venn](#)

Publisert 11.06.2015 kl. 06:24 Oppdatert 11.06.2015 kl. 06:46

www.arcticconnect.no

Søk på Youtube: Sør-Varanger Utvikling

- <https://youtu.be/bpeqnNHOq7E>

Cinia.fi

Kirkenes.no

Facebook Kirkenes.no

Vi trenger politisk vilje og kapital til å forberede lokale og regionale ringvirkninger

